



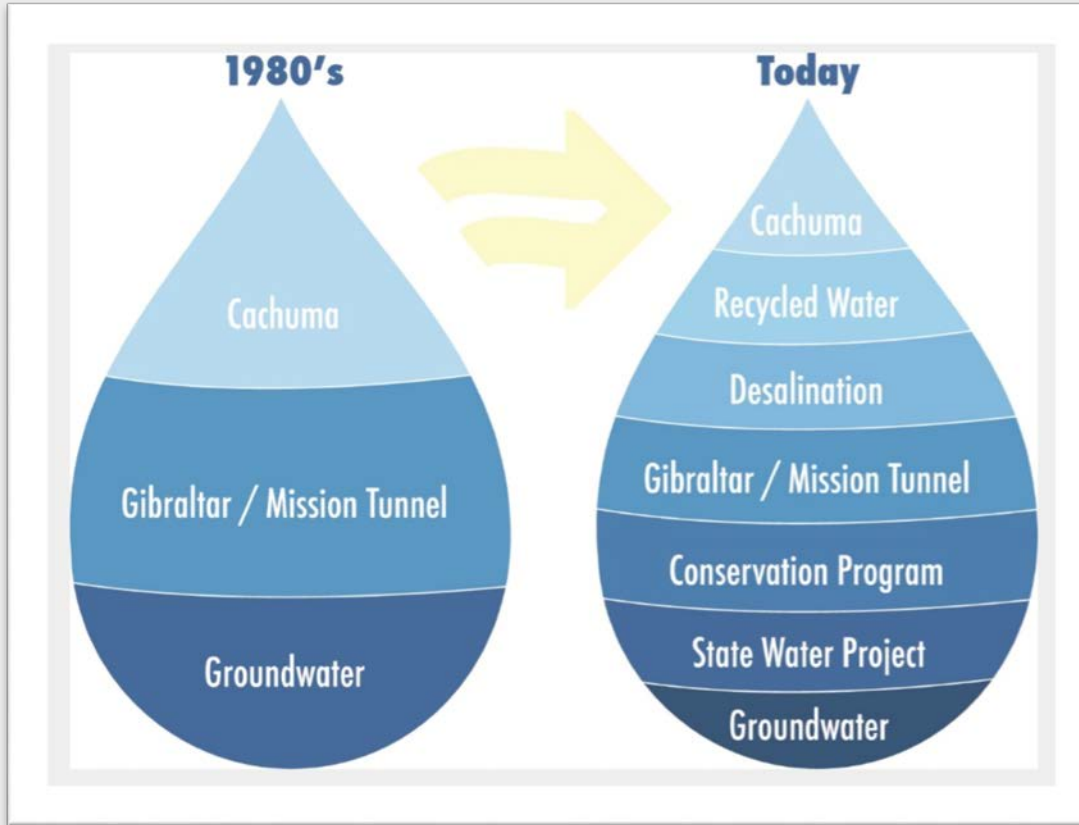
PUBLIC WORKS DEPARTMENT
WATER RESOURCES DIVISION

CHARLES E. MEYER SEAWATER DESALINATION PLANT

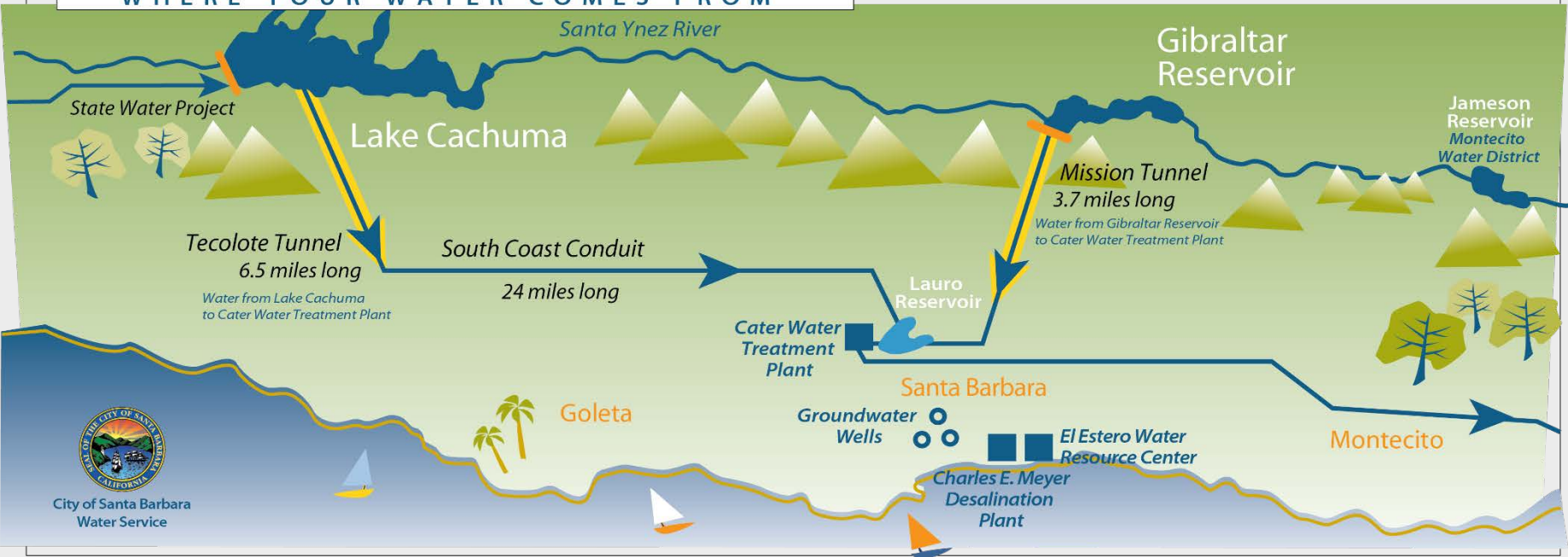


City of
SANTA BARBARA
1806 Dam & Aqueduct





WHERE YOUR WATER COMES FROM

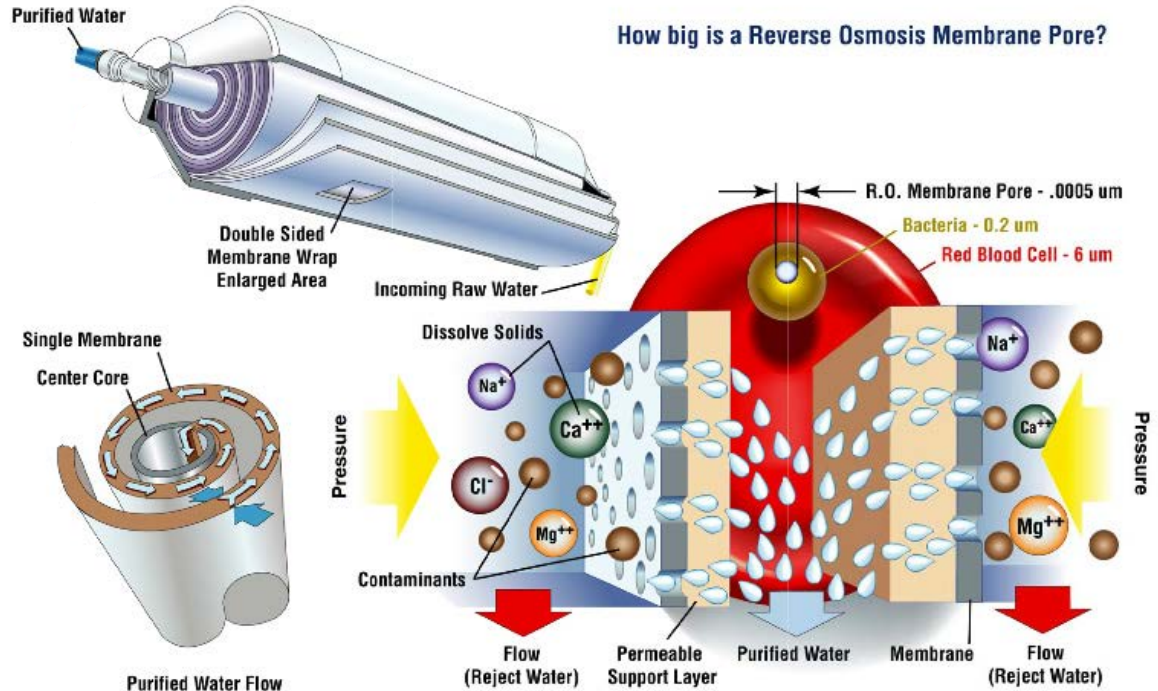


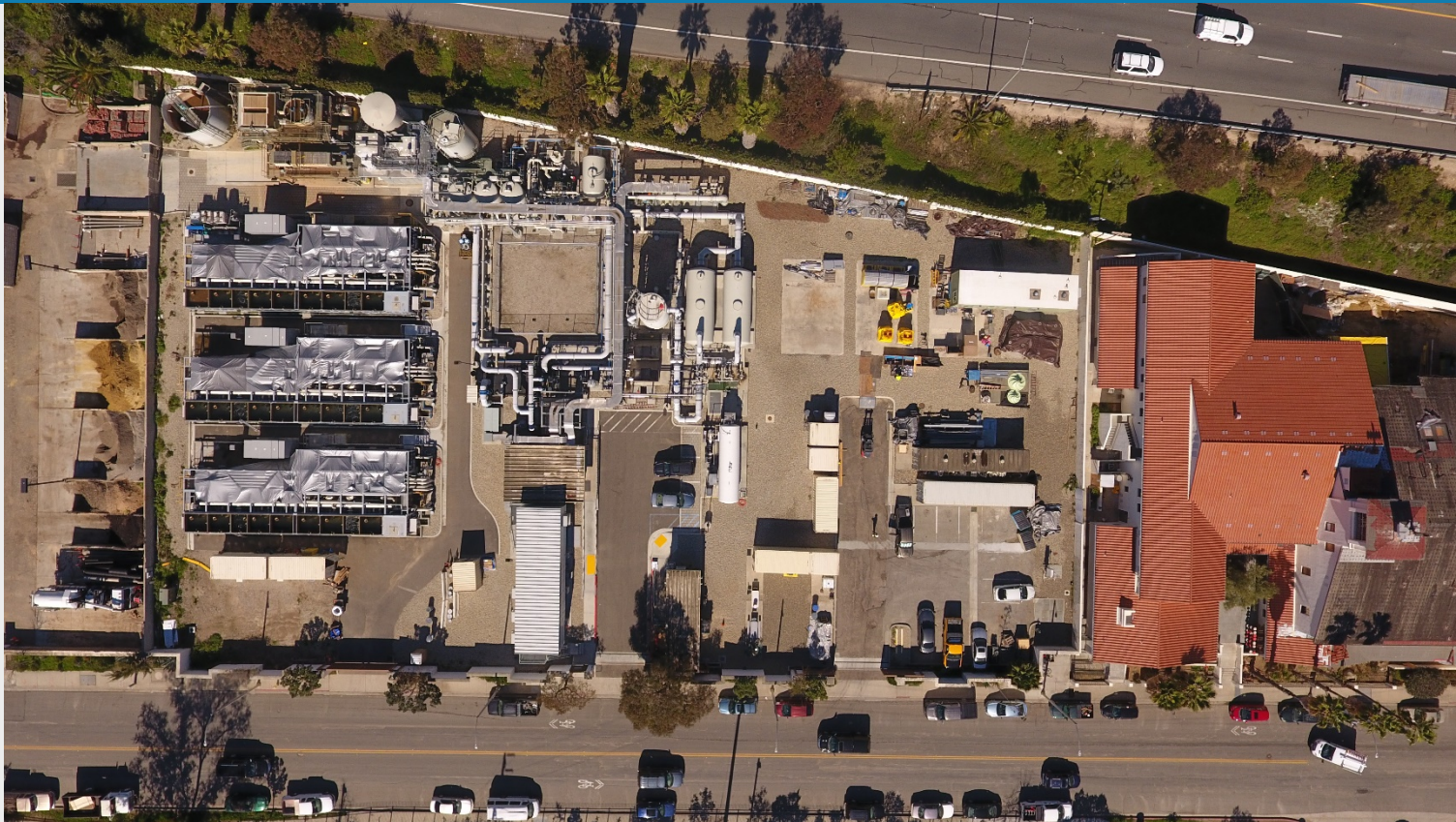


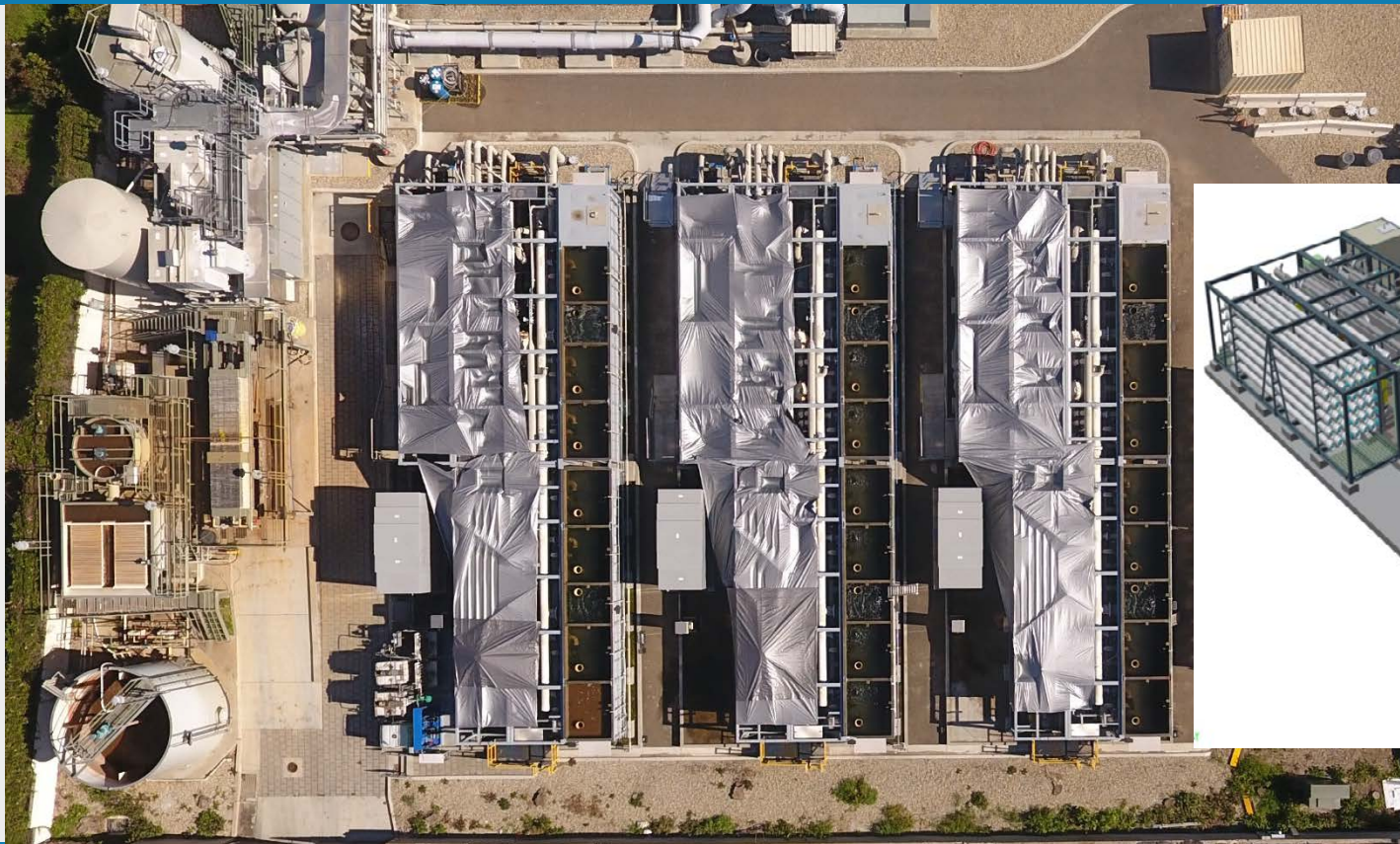
Intake Facility



Reverse Osmosis

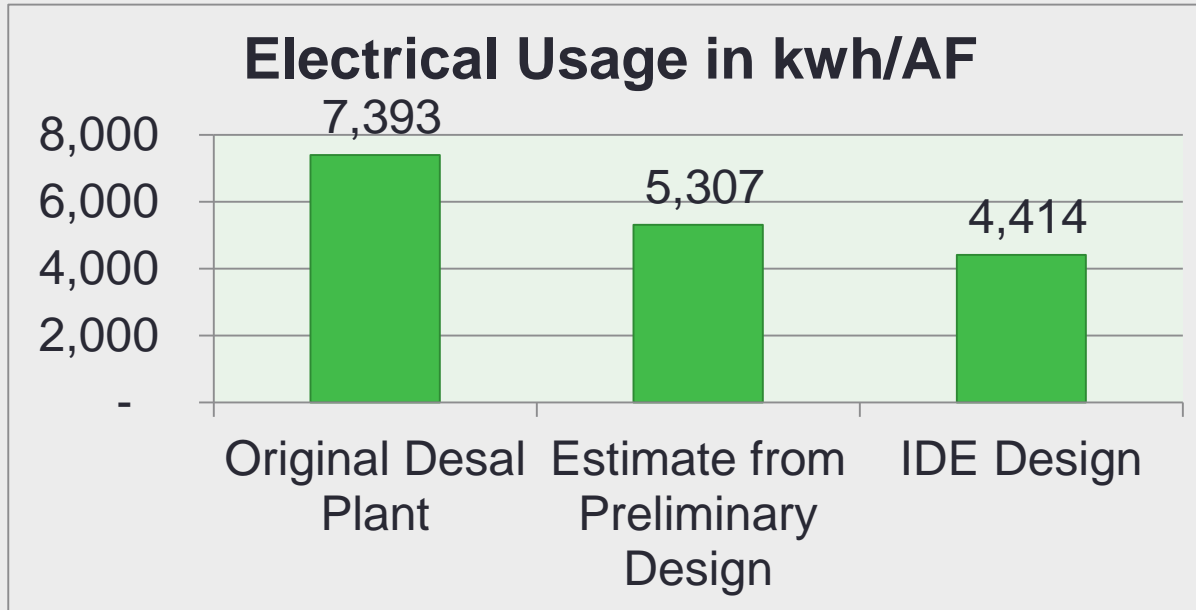








Desal Electrical Usage

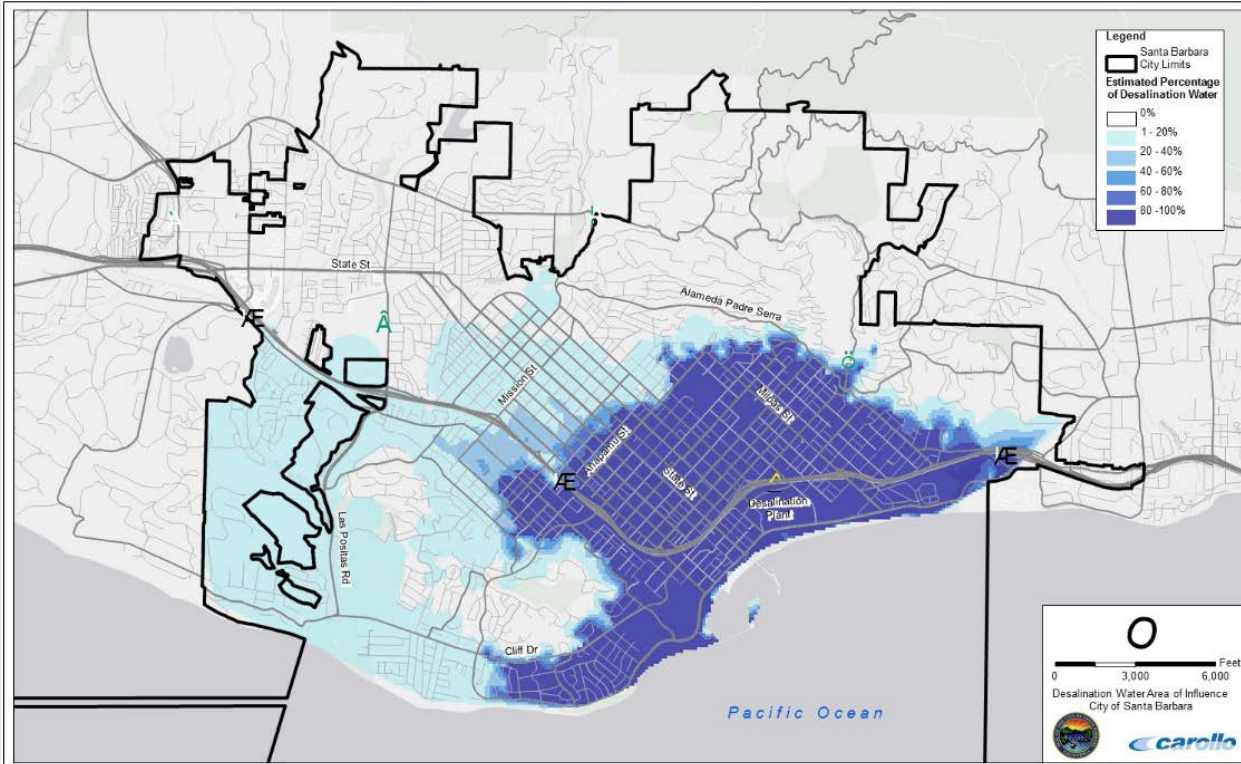


- Uses 40% less energy than original plant

Reactivation Costs

- Capital Cost ~\$72 million (State Revolving Fund Loan)
 - *\$4.2M/Year debt service over 20 years at 1.6% interest*
- Operational Costs
 - \$1.5M/Year for Standby
 - \$4.1M/Year for Operation at 3,125 AFY

Region and Estimated Percentage of Desalinated Water Customers May Receive



Questions?